



INSTITUTE *of* PUBLIC POLICY

Harry S Truman School of Public Affairs

BOONE COUNTY ISSUES ANALYSIS DEMOGRAPHIC & POVERTY DATA SUPPLEMENT

Jacqueline Schumacher, Policy Analyst &
Jill R. Lucht, Senior Policy Analyst

October 5, 2012

*Prepared for the City of Columbia, Boone County, and
Heart of Missouri United Way*

INSTITUTE *of* PUBLIC POLICY, Harry S Truman School of Public Affairs, University of Missouri
Mail: 137 Middlebush Hall / Columbia, MO 65211
Phone (573) 882-1739 Fax (573) 884-3839
Website: ipp.missouri.edu

Below are a series of tables and figures providing demographic information for Boone County and provide a closer look at poverty. When possible, the tables and figures provide a comparison between Boone County, the State of Missouri, and/or the U.S. Narrative and analysis of these tables are include in the Boone County Issues Analysis reports on Economic Opportunity and Independent Living and offer context of the situation in more detail.

TABLE 1: DEMOGRAPHICS

	2000		2010		Trend	
	Missouri	Boone	Missouri	Boone	Missouri Change	Boone Change
Total Population	5,595,211	135,454	5,988,927	162,642	↑	↑
Race ¹						
Caucasian	84.9%	87.1%	82.8%	86.3%	↓	↓
Black	11.2%	9.4%	11.6%	8.6%	↑	↓
Ethnicity						
Hispanic	2.1%	1.8%	3.5%	3.0%	↑	↑
Age						
Under 18 years	25.5%	22.8%	23.8%	21.0%	↓	↓
18-24 years old	9.6%	19.9%	9.8%	21.8%	↑	↑
25-64 years old	51.4%	48.7%	52.3%	47.9%	↑	↓
65+ years old	13.5%	8.6%	14.0%	9.3%	↑	↑
75+ years old	6.5%	4.2%	6.5%	4.2%	=	=
Data source for 2000 Demographic, Social and Economic conditions is the Census 2000 Summary files						
Data source for 2010 Demographic, Social and Economic conditions is the Census 2010 Summary files						

TABLE 2: SOCIAL CONDITIONS FOR BOONE COUNTY

	2000	2010	Change
Total Households	53,094	64,077	↑
Total Family Households	31,391	36,312	↑
Highest Degree Earned			
HS diploma	23.3%	23.3%	=
Some college, no degree	19.5%	17.5%	↓
Associate's degree	4.7%	5.9%	↑
Bachelor's	23.1%	25.0%	↑
Graduate or professional degree	18.6%	20.2%	↑
Head of Household ²			
Two parents	45.5%	42.1%	↓
Female-single	10.4%	10.7%	↑
Data source for 2000 Demographic, Social and Economic conditions is the Census 2000 Summary files.			
Data source for 2010 Demographic, Social and Economic conditions is the Census 2010 Summary files.			
Data source for 2010-ACS 5-yr Demographic, Social and Economic conditions is the American Community Survey, 5 year estimates.			

¹ Race alone or in combination with one or more races.

² The 2008 ACS used a joint relationship/marital status edit and 2000 Census did not. Also, 2000 Census provided more response categories because of a write-in option that was not used in the ACS. Differences in weighting schemes between the census and the ACS could produce inconsistencies in comparisons.



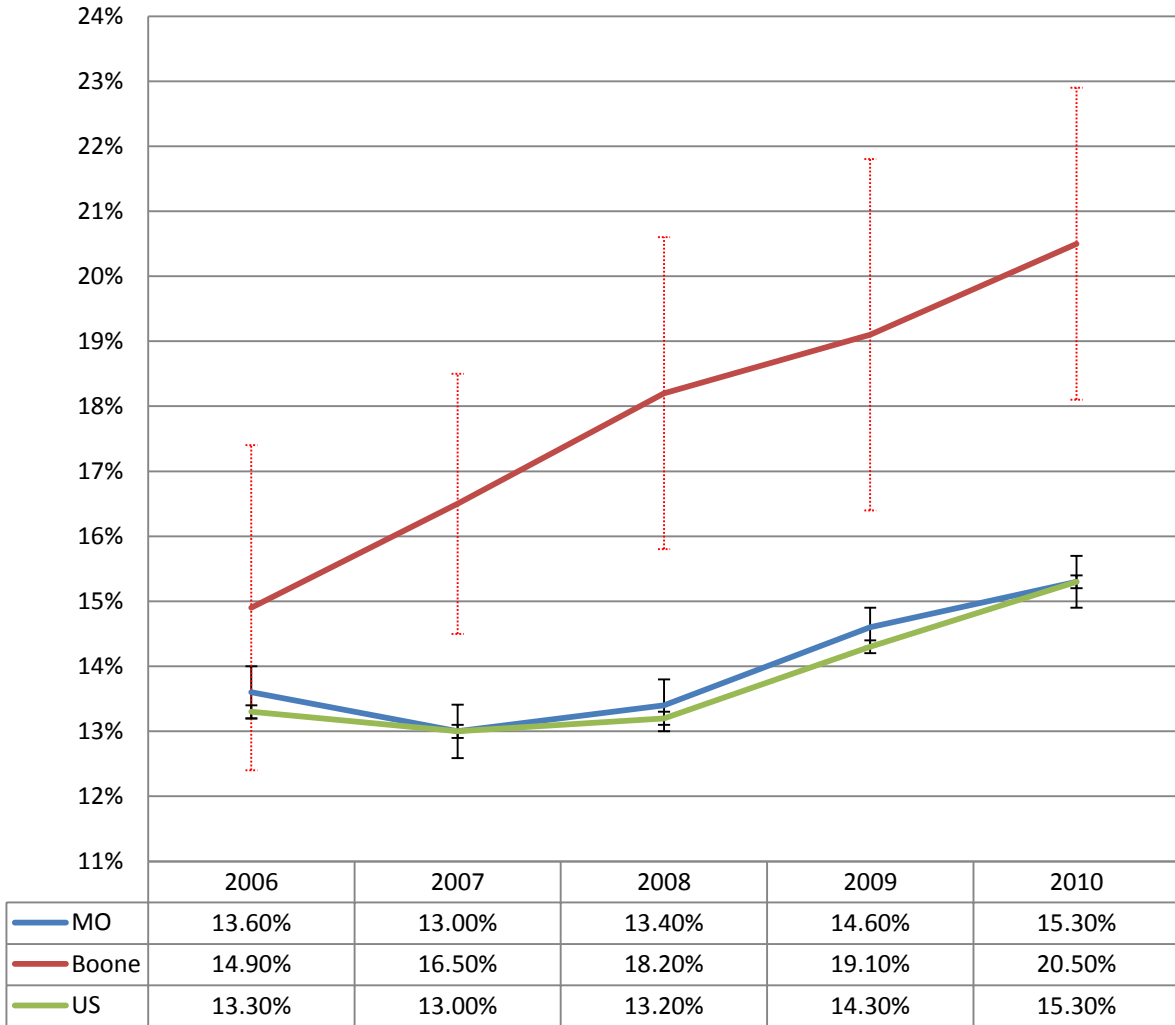
TABLE 3: ECONOMIC CONDITIONS FOR BOONE COUNTY

	2000 Census	2010 ACS 5-yr	Change	2009 ACS 1-yr	2010 ACS 1-yr
		MOST RELIABLE		LEAST RELIABLE MOST CURRENT	
Employment Status for Population 16 Years and Older	107,690	128,476 (+/- 207)	↑	126,640 (+/- 590)	132,536 (+/- 556)
In labor force	71.7%	70.1% (+/- 0.8%)	↓	71.8% (+/- 2.1)	67.2% (+/- 2.2%)
Employed	67.8%	65.7% (+/-1.0%)	↓	66.6% (+/- 2.3%)	62.5% (+/- 2.3%)
Unemployed	3.8%	4.2% (+/- 0.4%)	↑	4.6% (+/- 1.0%)	4.7% (+/- 4.7%)
Median Household Income	\$37,485	\$45,786 (+/- \$1,288)	↑	\$46,880 (+/- \$3,442)	\$41,006 (+/- \$2,095)
Median Family Income	\$51,210	\$64,616 (+/- \$2,065)	↑	\$65,411 (+/- \$3,800)	\$62,730 (+/- \$4,210)
Median cost of house	\$107,400	\$153,900 (+/- \$3,104)	↑	\$156,900 (+/- \$6,867)	\$158,500 (+/- \$5,813)
Poverty Guidelines-Family of 4 (See Table 4 for more information.)	\$17,050	\$22,050	\$23,052 (2012)	-	-
Below Poverty					
Children (Under 18)	-	16.6% (+/- 2.6%)	↑	18.6% (+/- 5.9%)	16.0% (+/- 4.4%)
Adults (18 and older)	15.1%	18.9% (+/- 1.0%)	↑	19.2% (+/- 2.5%)	21.8% (+/- 2.4%)
Seniors (65 and older)	5.9%	5.2% (+/- 1.3%)	↓	2.9% (+/- 1.8%)	10.6% (+/- 5.7%)
Families with female headed household	26.0%	34.2% (+/-5.3%)	↑	40.8% (+/- 9.6%)	31.9% (+/- 11.9%)

Data source for 2000 Demographic, Social and Economic conditions is the Census 2000 Summary files
 Data source for 2010 Demographic, Social and Economic conditions is the American Community Survey, 5 year estimates. One year estimates from the American Community Survey are also provided for 2009 and 2010.



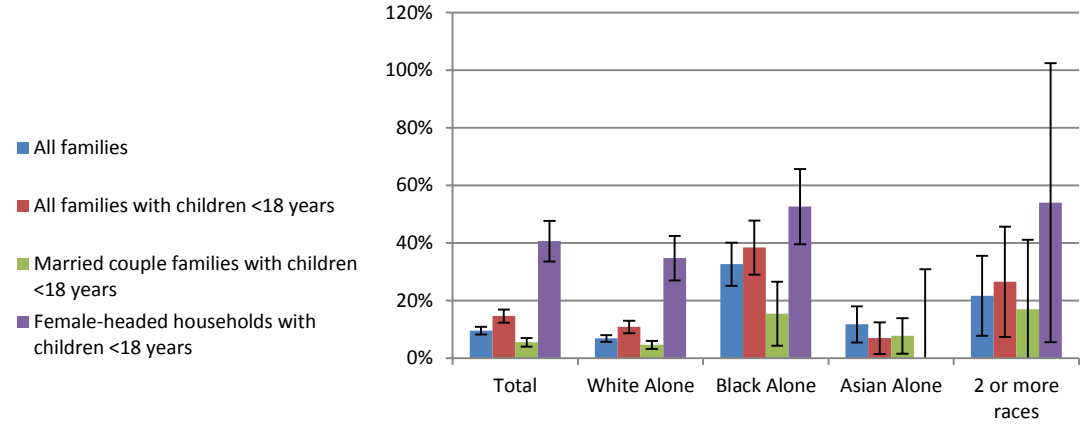
FIGURE 1: POVERTY RATE
WITH MARGINS OF ERROR



Source: American Community Survey's one-year estimates



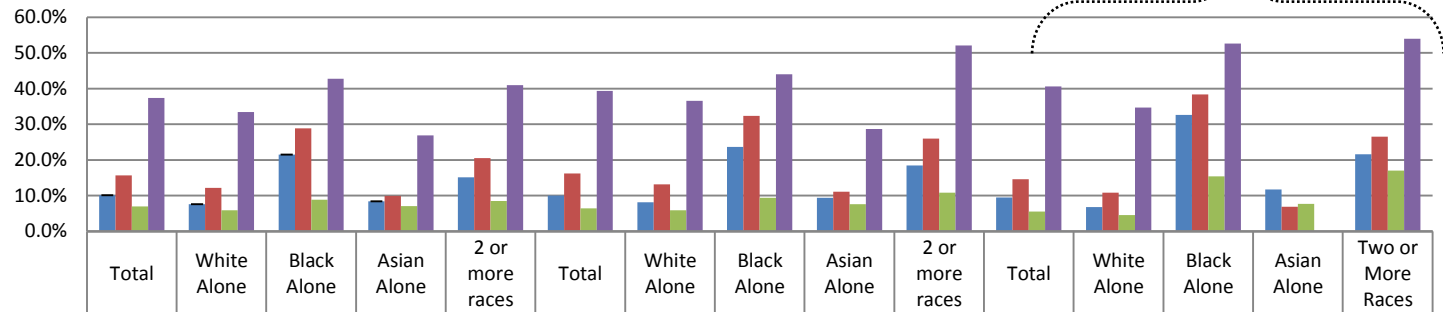
FIGURE 2: AVERAGE RATE OF BOONE COUNTY FAMILIES IN POVERTY BY RACE, 2006-2010 WITH MARGINS OF ERROR



Source: American Community Survey 5-year estimates 2010, Table DP03

FIGURE 3: AVERAGE RATE OF FAMILIES IN POVERTY BY RACE: U.S., MISSOURI & BOONE COUNTY, 2006-2010

See Figure 2: Boone Margins of Error

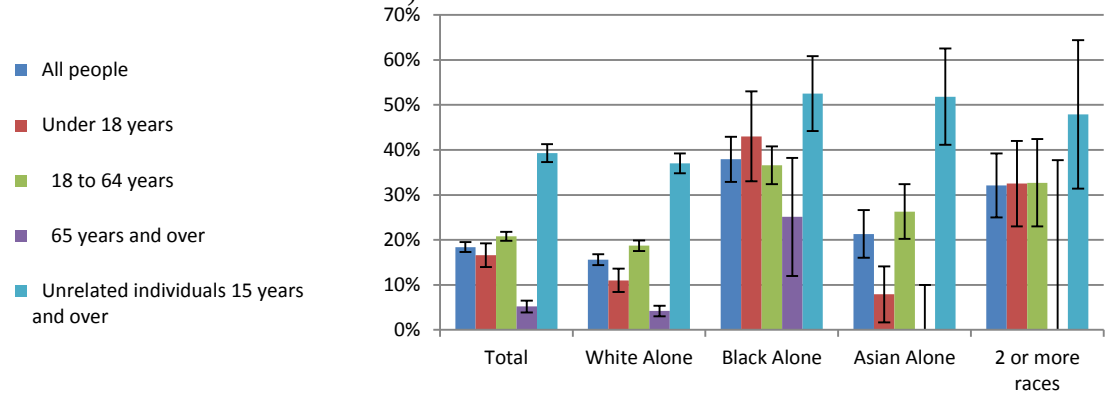


	United States					Missouri					Boone County Missouri				
	Total	White Alone	Black Alone	Asian Alone	2 or more races	Total	White Alone	Black Alone	Asian Alone	2 or more races	Total	White Alone	Black Alone	Asian Alone	Two or More Races
All families	10.1%	7.6%	21.5%	8.4%	15.1%	10.0%	8.1%	23.7%	9.4%	18.5%	9.5%	6.8%	32.6%	11.7%	21.6%
All families with children <18 years	15.7%	12.2%	28.9%	9.9%	20.5%	16.2%	13.2%	32.4%	11.1%	26.0%	14.6%	10.8%	38.4%	6.9%	26.5%
Married couple families with children <18 years	7.0%	5.9%	8.9%	7.1%	8.5%	6.4%	5.9%	9.4%	7.6%	10.8%	5.5%	4.6%	15.4%	7.7%	17.0%
Female-headed households with children <18 years	37.4%	33.4%	42.8%	26.9%	41.0%	39.4%	36.6%	44.0%	28.7%	52.1%	40.6%	34.7%	52.6%	0.0%	54.0%

Source: American Community Survey, 5-year estimates 2010, Table DP03



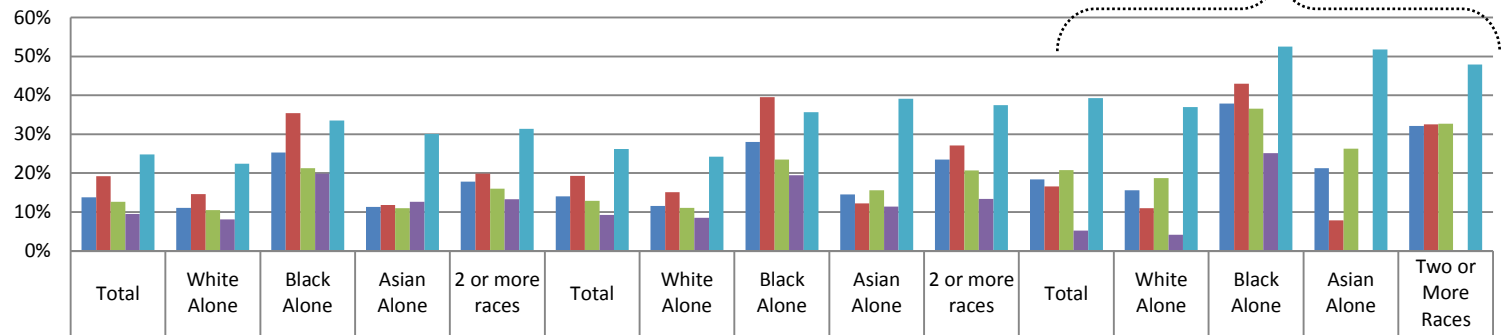
FIGURE 4: AVERAGE RATE OF BOONE INDIVIDUALS IN POVERTY BY AGE, 2006-2010 WITH MARGINS OF ERROR



Source: American Community Survey, 5-year estimates 2010, Table DP03

FIGURE 5: AVERAGE RATE OF INDIVIDUALS IN POVERTY BY AGE: U.S., MISSOURI & BOONE COUNTY, 2006-2010

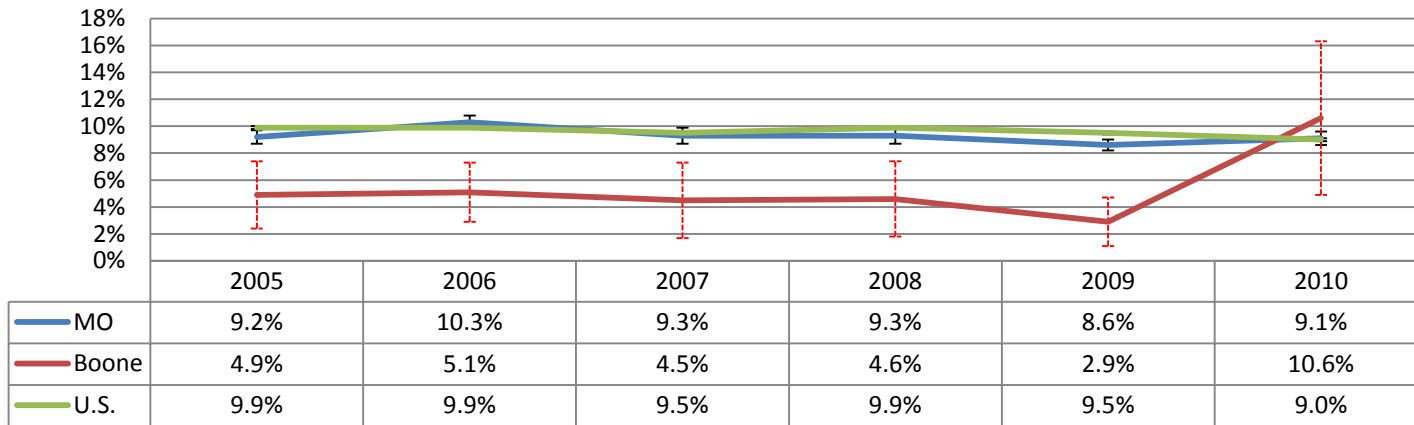
See Figure 4: Boone Margins of Error



	United States					Missouri					Boone County Missouri				
	Total	White Alone	Black Alone	Asian Alone	2 or more races	Total	White Alone	Black Alone	Asian Alone	2 or more races	Total	White Alone	Black Alone	Asian Alone	Two or More Races
All people	13.8%	11.1%	25.3%	11.3%	17.8%	14.0%	11.6%	28.0%	14.5%	23.5%	18.4%	15.6%	37.9%	21.3%	32.1%
Under 18 years	19.2%	14.6%	35.4%	11.8%	19.9%	19.3%	15.1%	39.5%	12.2%	27.1%	16.6%	11.0%	43.0%	7.9%	32.5%
18 to 64 years	12.6%	10.5%	21.3%	11.0%	16.0%	12.9%	11.1%	23.5%	15.6%	20.7%	20.8%	18.7%	36.6%	26.3%	32.7%
65 years and over	9.5%	8.1%	19.9%	12.6%	13.3%	9.3%	8.5%	19.5%	11.4%	13.4%	5.2%	4.2%	25.1%	0.00%	0.00%
Unrelated individuals 15 years and over	24.8%	22.4%	33.5%	30.1%	31.4%	26.2%	24.2%	35.7%	39.1%	37.5%	39.3%	37.0%	52.5%	51.8%	47.9%

Source: American Community Survey, 5-year estimates 2010, Table DP03

FIGURE 6: POVERTY RATE AMONG 65+
WITH MARGINS OF ERROR



Source: American Community Survey's. one-year estimates

FIGURE 7: POVERTY AMONG AGE 65+ WITH A DISABILITY
WITH MARGINS OF ERROR

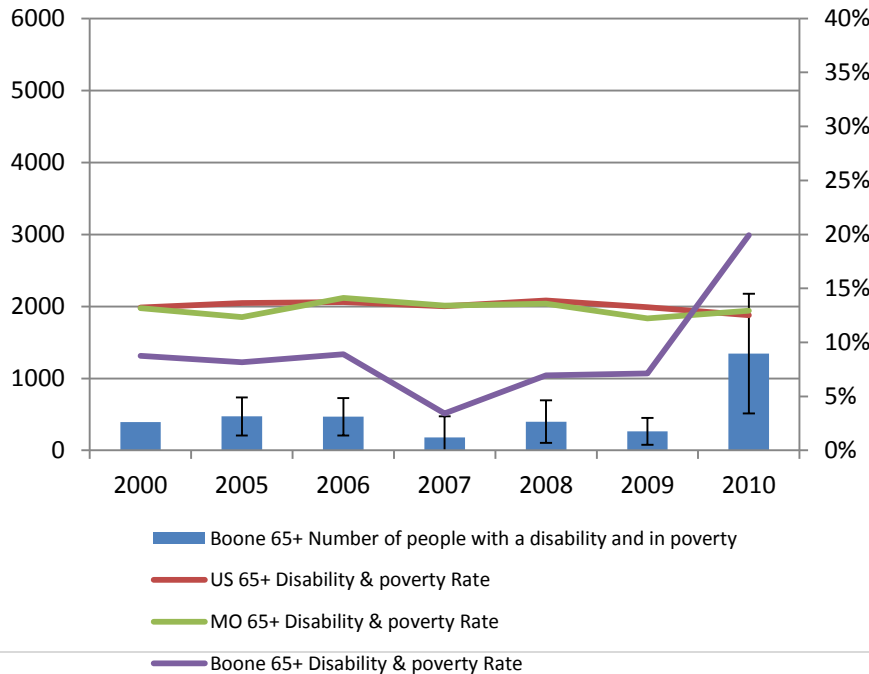


FIGURE 8: POVERTY AMONG AGE 18-64 WITH A DISABILITY
WITH MARGINS OF ERROR

